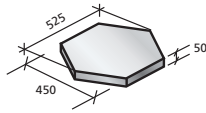
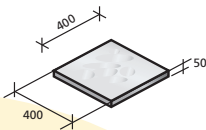
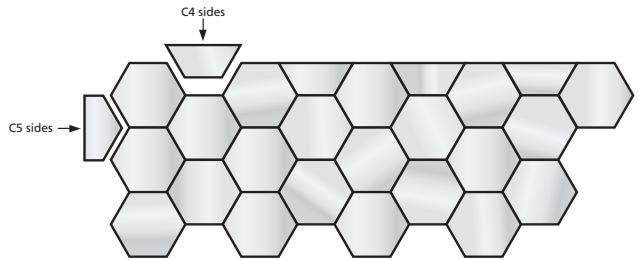


Flags for Paving



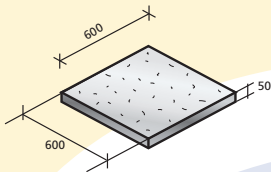
Hexagonal Flag

Wetcast Smooth Finish
21 Kgs each
5.25 No per sq. metre



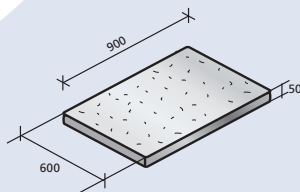
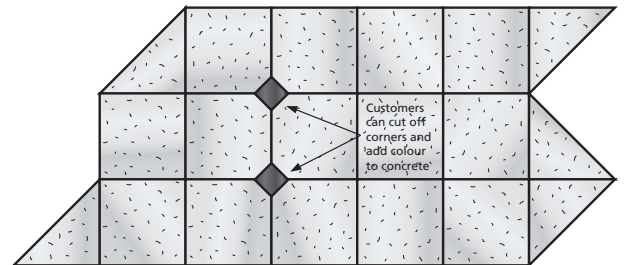
400 x 400 (16" x 16") Flag

Hyd. Compressed
Riven (slate) Finish
19 Kgs each
6.25 No per sq. metre



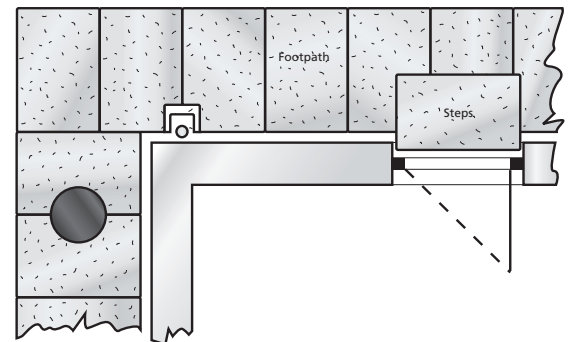
600 x 600 (2' x 2') Flag

Hyd. Compressed
Anti Slip Finish
42 Kgs each
2.77 No per sq. metre



900 x 600 (3' x 2') Flag

Hyd. Compressed
Anti Slip Finish
63 Kgs each
1.85 No per sq. metre



All flags are strapped in bundles of 20.



Flags have many uses such as patios, footpaths, steps etc. Your patio should be carefully planned before you start laying. It is not only the patio flags, rather the design and how they blend in with other materials surrounding them, which give your patio the pleasing final look. Try to avoid large areas of the same unless you can add design or feature. Avoid long straight edges, use stepped edges to knit into scrub or gravel beds where possible.

Laying Flags

After placing well compacted hardcore to correct falls, place approx 25-30mm deep of loose dust on top and screed it level. The flags should then be placed on the loose dust screed, leaving them approx 10mm apart for grouting, and taped firmly into place. It is recommended that a concrete sealer be applied to the finished flags which will leave them much easier cleaned

Ref: TC05/1

Date: 1/12/03

TRACEY CONCRETE
Limited

Old Rossorry
Sligo Road
Enniskillen
Co.Fermanagh